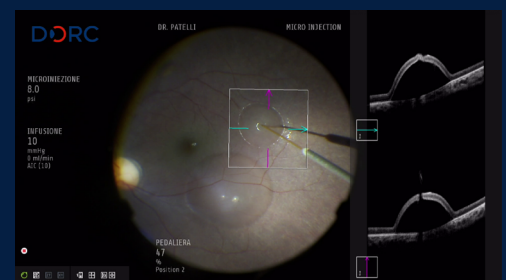


“Subretinal Injection is a critical surgical step for fluid delivery under the macula or the retina in general. For gene therapy in particular bleb formation and its control is very important. Bleb formation has to be very gentle and slow in order to reduce the trauma to the photoreceptor and to avoid the detachment of the fovea in gene therapy. INICIO device with DORC EVA NEXUS permits the surgeon to control very precisely the bleb formation using the footswitch with a pressure delivery of ± 1 PSI ($\sim 0,07$ bar). Technically, to start the bleb the pressure has to be high (varying from the retina conditions and age of the patients) and must be reduced immediately after the bleb starting in order to better control the size of the bleb itself. This is easy using the footswitch pedal, while almost impossible with manual injection.”*

** DORC's subretinal injection devices are medical devices intended to inject gases and aqueous fluids (such as air and/or BSS) into the subretinal space. Consult the prescription of the fluid to be injected for compatibility with the subretinal injection devices.*

The statements of the doctors reflect only their personal opinions and experiences and do not necessarily reflect the opinion of any institution they are affiliated with. The doctors alone are responsible for the content of their experience reported and any potential resulting infringements. DORC and its affiliates do not have clinical evidence supporting the opinions and statements of the doctors nor accept any responsibility or liability of the doctors' content.

Fabio Patelli
MD, Italy



Watch surgical video and learn more